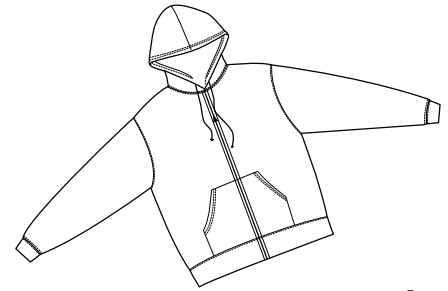
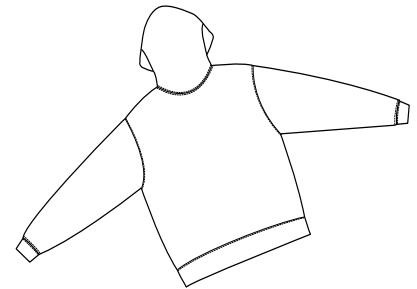


# Vintage Fleece Full Zip Hoodie



Front



Back

## DT139

Designer Notes: With heavily-brushed fleece backing for sherpa-like softness and modern exposed seams, this is no ordinary hoodie.

Fabric/Style: 11-ounce, 80/20 cotton/poly, sherpa-effect backing throughout, exposed seams, 2-way front zipper, rib knit cuffs and hem, kangaroo pockets.

### Care Instructions:

Machine wash cold. Wash inside out with like colors. Do not bleach. Tumble dry low. Warm iron if necessary.

### Finished Measurements in Inches

Size	XS	S	M	L	XL	2X	3X	4X
Length	26.5	27.5	28.5	29.5	30.5	31.5	32.5	33.5
Width	22	23	24	25.5	27	28.5	30	32
Sleeve	34	35	36	37	38	39	40	41
Areas for Decoration	Left Chest / Right Chest / Full Back				Port Pocket™		NA	

### Colors

	Black
	Army
	Deep Sea Blue
	Earth Brown

### Please Note:

Colors shown are approximate and for reference only. For closest match see PMS colors, or for exact match, returnable samples and grommeted samples are available.

Collar measured center back seam to top hem, Chest width 1" below arm hole, Side pocket from top to bottom of opening, Body length from back neck seam to hem, Sleeve length from center back seam to hem

### Color Chart

Colors	Black	Army	Deep Sea Blue	Earth Brown
Textile PMS	No Match	No Match	No Match	No Match
General PMS	Process Black C	5815 C	431 C	4715 C