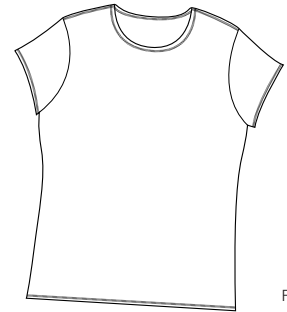


Ladies Tee w/ Contrast Stitching



Front



Back

DT214

- * Contrast stitching on sleeves, shoulders, neck and hem
- * 5.9-ounce
- * 100% ring spun combed cotton
- * 1 x 1 rib construction

Care Instructions:

Machine wash cold. Wash inside out.
Wash with like colors. Do not bleach.
Tumble dry low. Warm iron if necessary.

Finished Measurements in Inches

Size	S	M	L	XL	XXL	Plus 1X	Plus 2X
Chest	14.75	15.75	16.75	17.75	18.75	21	23.5
Body	22	23	24	25	26	28.75	31.5
Sleeve	4	4.25	4.5	4.75	5	6	7

Chest width measured .5" below armhole. Body length measured from high point shoulder to hem.
Sleeve length measured from shoulder seam to hem.

Colors

	Black/Red
	Brown/Pink
	Emerald/Lime
	White/Black

Please Note:

Colors shown are approximate and for reference only. For closest match see PMS colors, or for exact match, returnable samples and grommited samples are available.

Color Chart

Shirt Colors	Black	Brown	Emerald	White
Textile PMS	19-4203TC	18-1015TC	18-5633TC	11-0601TC
General PMS	Process Black	7532C	341C	No Match